

FINAL MA MS4 GENERAL PERMIT



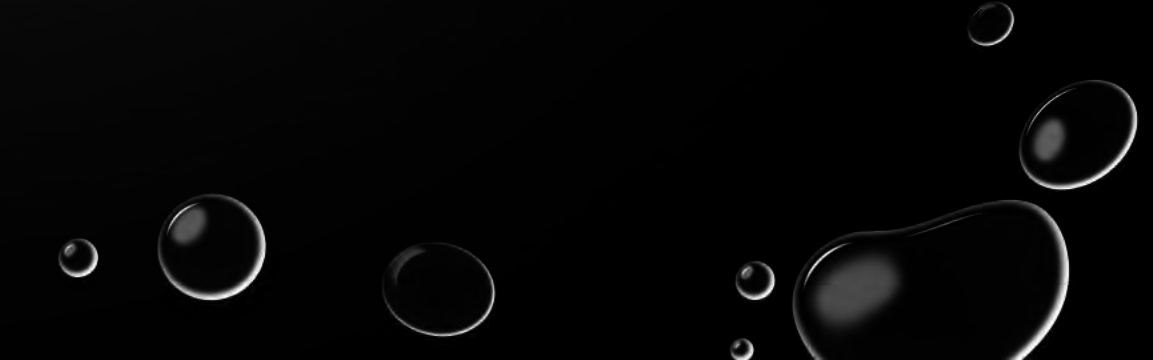
NEWTON TEDDER

EPA REGION 1

BOSTON

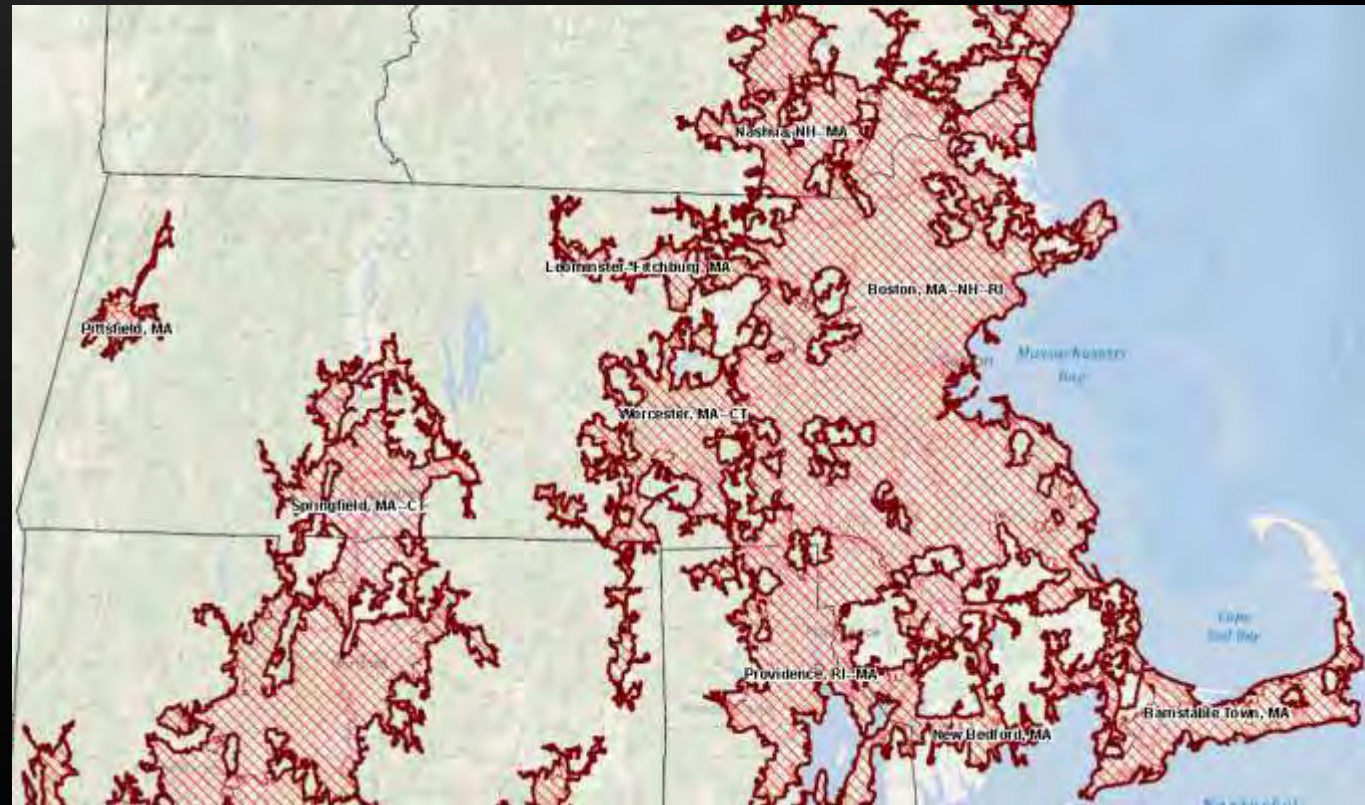


PRESENTATION OVERVIEW

- HISTORY
 - GENERAL OVERVIEW MS4 PERMIT REQUIREMENTS AND CHANGES FROM THE DRAFT PERMIT
 - EPA TOOLS DISCUSSION
 - MASSDEP TOOLS (FRED CIVIAN)
 - QUESTIONS
- 

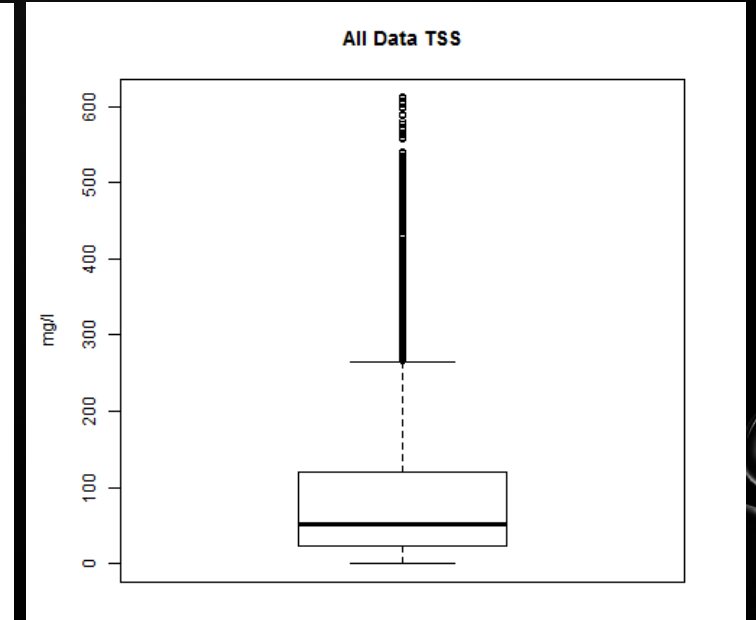
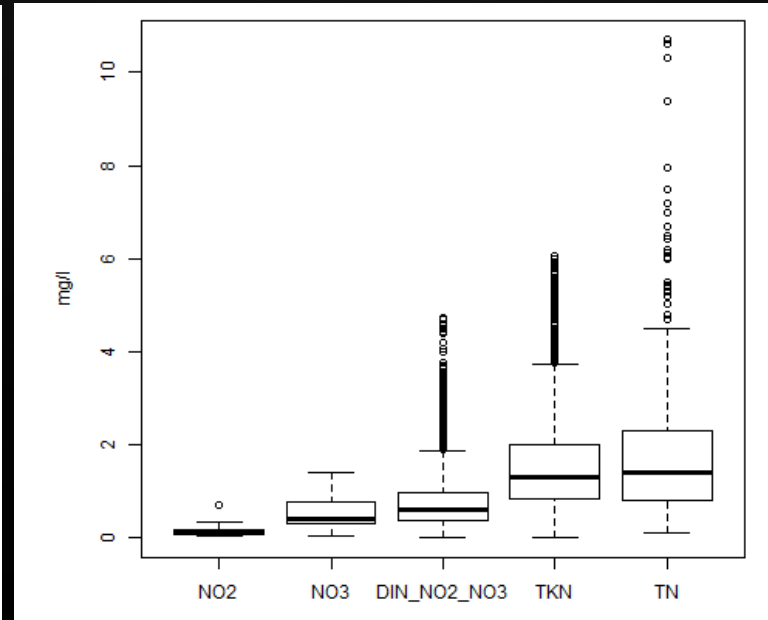
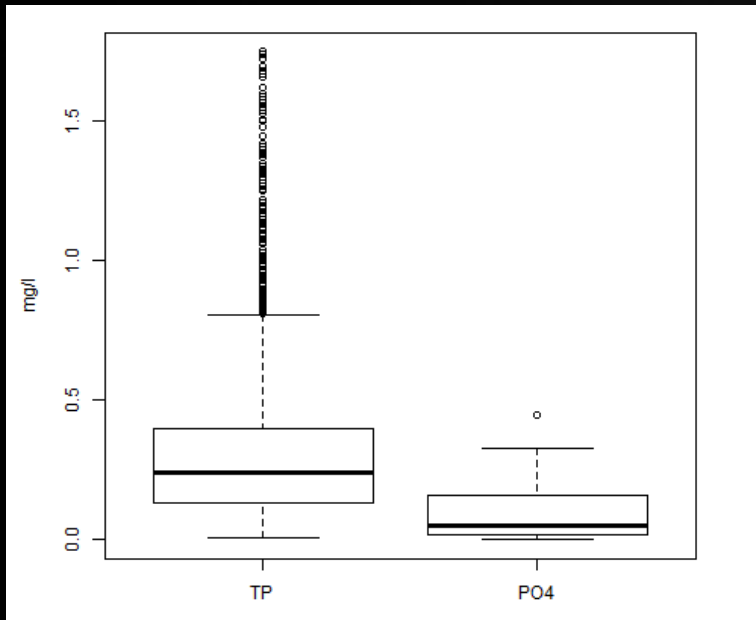
NPDES PERMITTING FOR SMALL MUNICIPAL SEPARATE STORM SEWER SYSTEMS

- 1987 AMENDMENT MANDATED THAT STORMWATER WAS TO BE REGULATED UNDER THE NPDES PROGRAM
- PHASE II REGULATIONS REQUIRED THESE PERMITS – 1999
- 260 MUNICIPALITIES COVERED IN MASSACHUSETTS

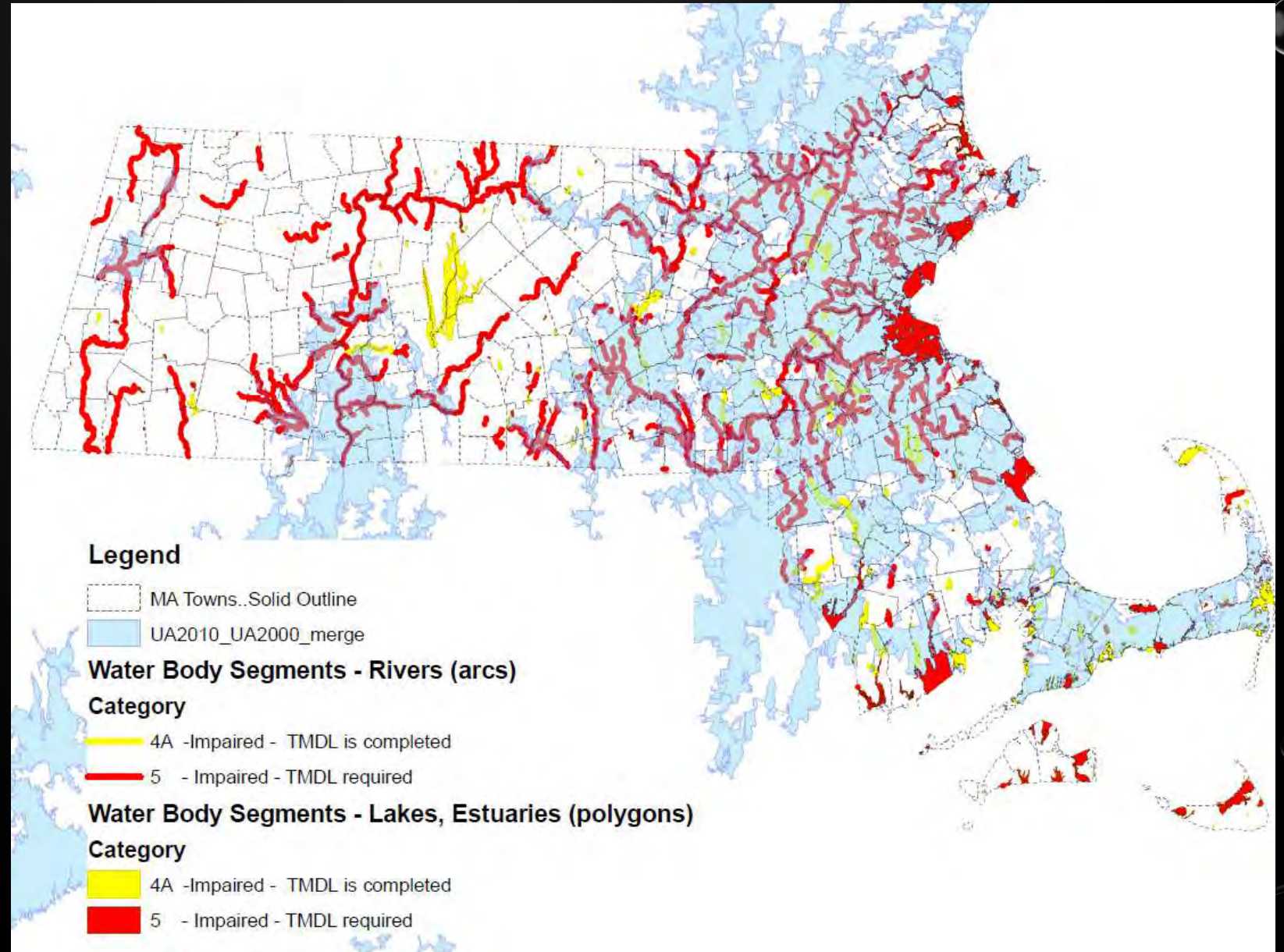


STORMWATER

- NATIONWIDE URBAN RUNOFF PROGRAM (1983)
 - FOUND HIGH LEVELS OF HEAVY METALS, FECAL COLIFORM, TSS, NUTRIENTS AND HYDROCARBONS IN URBAN RUNOFF
- NATIONAL STORMWATER QUALITY DATABASE (2015)
 - EMC DATA FOR STORMWATER CONSTITUENTS



STORMWATER
DISCHARGES ARE
CAUSING OR
CONTRIBUTING TO AT
LEAST OF THE **55%**
IMPAIRMENTS IN ALL
MASSACHUSETTS'
ASSESSED WATERS



TIMING

- CO ISSUED FINAL WITH MASSDEP APRIL 2016
- EFFECTIVE DATE **JULY 1, 2017**
- NOTICE OF INTENT DUE **SEPTEMBER 29, 2017**
- STORMWATER MANAGEMENT PLAN **JULY 1, 2018**

MASSACHUSETTS MS4 GENERAL PERMIT

SIX MINIMUM CONTROL MEASURES

- PUBLIC EDUCATION
- PUBLIC INVOLVEMENT
- ILLICIT DISCHARGE DETECTION & ELIMINATION
- CONSTRUCTION SITE RUNOFF
- POST-CONSTRUCTION STORMWATER MANAGEMENT
- GOOD HOUSEKEEPING/POLLUTION PREVENTION

WATER-QUALITY BASED REQUIREMENTS

- IMPAIRED RECEIVING WATERS
 - NITROGEN OR PHOSPHORUS
 - METALS
 - SOLIDS
 - BACTERIA OR PATHOGENS
 - CHLORIDE
 - OIL AND GREASE
- W/ OR W/O A TMDL

MCM -1 PUBLIC EDUCATION AND OUTREACH

REQUIREMENTS

- FOUR AUDIENCES
 - RESIDENTS
 - BUSINESSES AND COMMERCIAL FACILITIES
 - DEVELOPERS
 - INDUSTRIAL FACILITIES
- TWO MESSAGES TO EACH AUDIENCE OVER THE PERMIT TERM

MAJOR CHANGES

- IF AN AUDIENCE DOES NOT EXIST WITHIN A PERMITTEES JURISDICTION THEN NO EDUCATION MESSAGES REQUIRED

MCM – 2 PUBLIC INVOLVEMENT AND PARTICIPATION

REQUIREMENTS

- PUBLIC REVIEW OF SWMP
- ALL REPORTS AVAILABLE TO THE PUBLIC

MAJOR CHANGES

- NONE

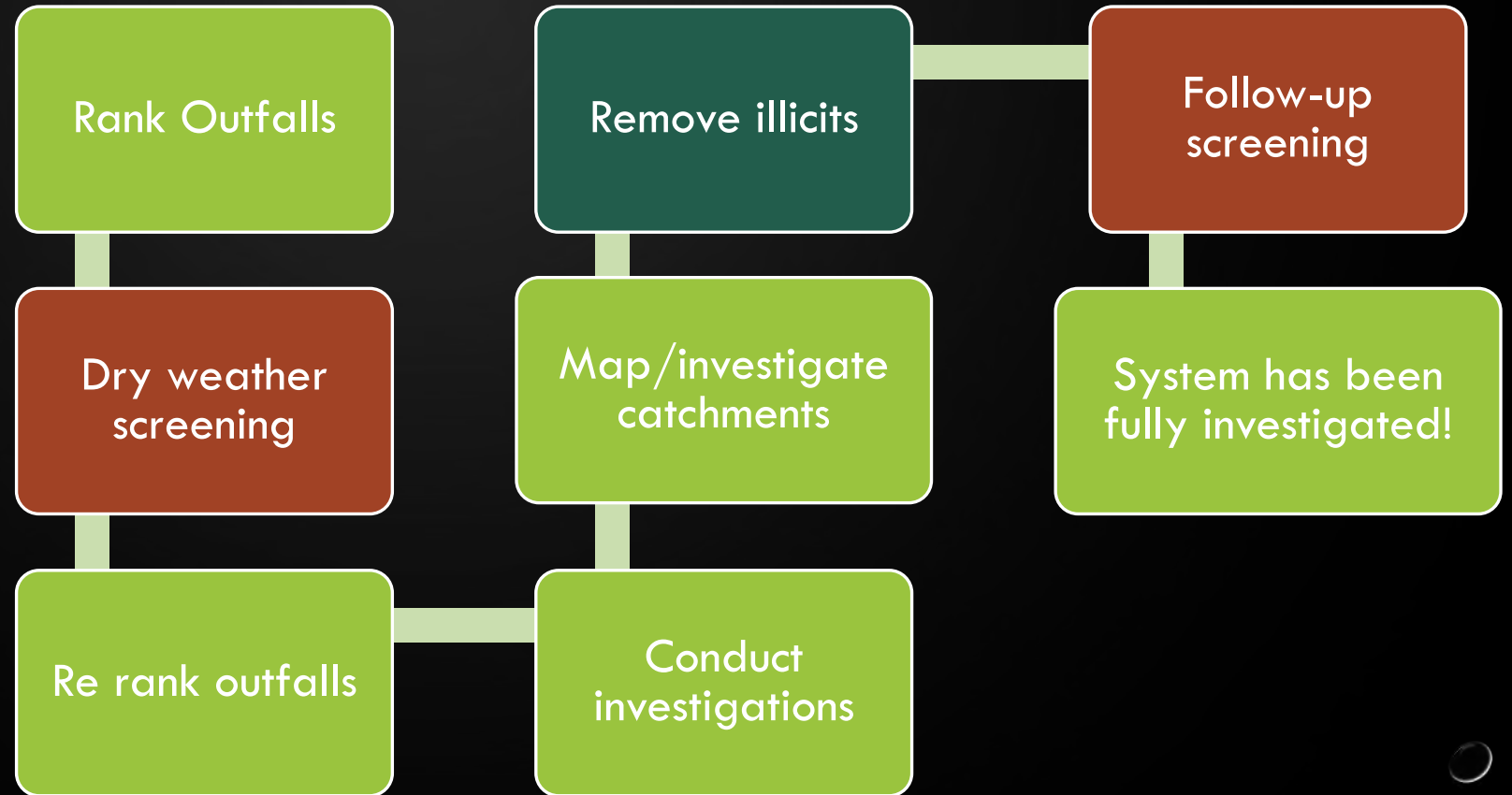
MCM 3 - ILLICIT DISCHARGE DETECTION AND ELIMINATION

- MORE PRESCRIPTIVE THAN 2003 PERMIT
- BASED ON REGION 1 ENFORCEMENT ACTIONS:

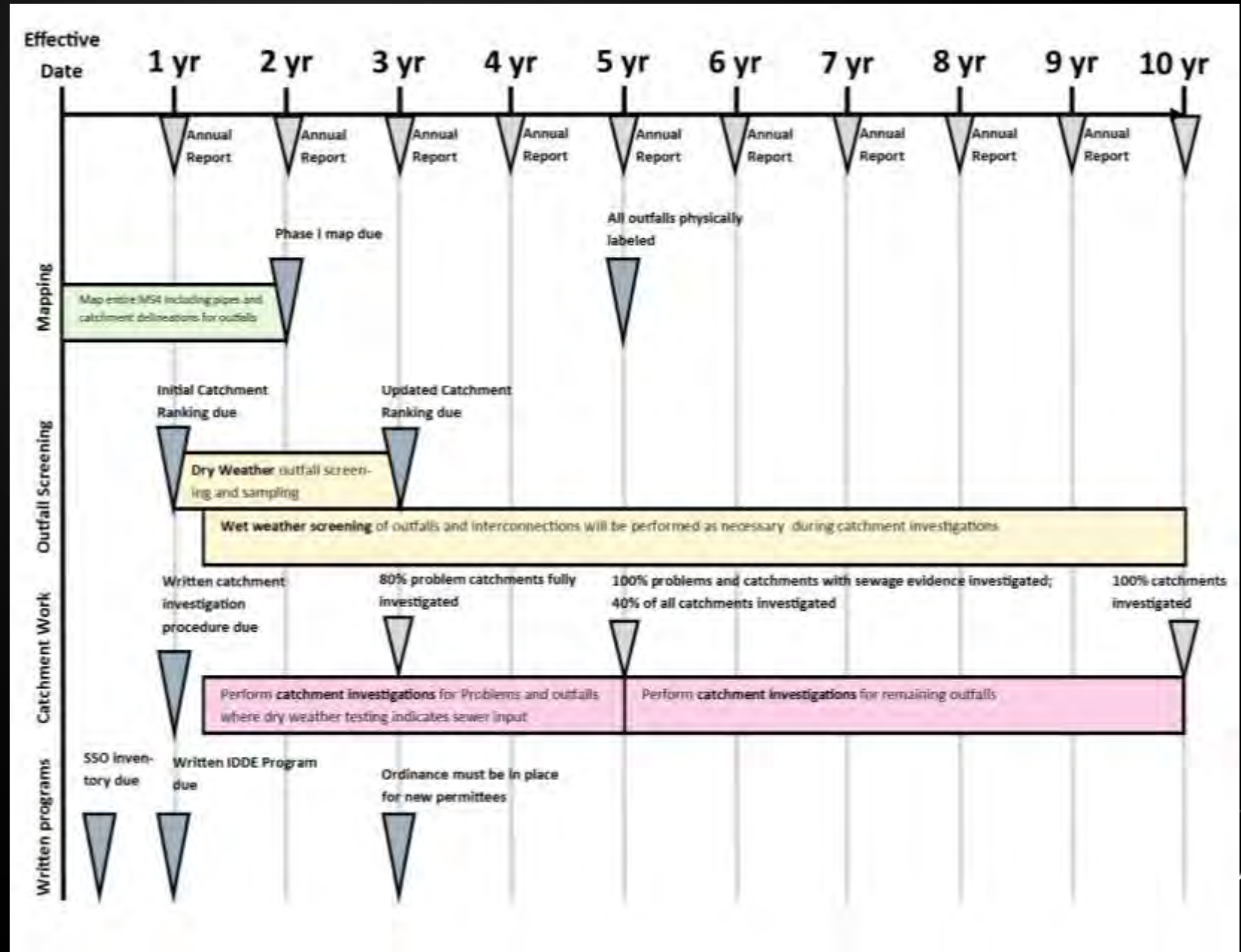
EX: OVER 58 MILLION GALLONS PER YEAR OF SEWAGE REMOVED FROM STORMWATER IN THE BOSTON HARBOR WATERSHED



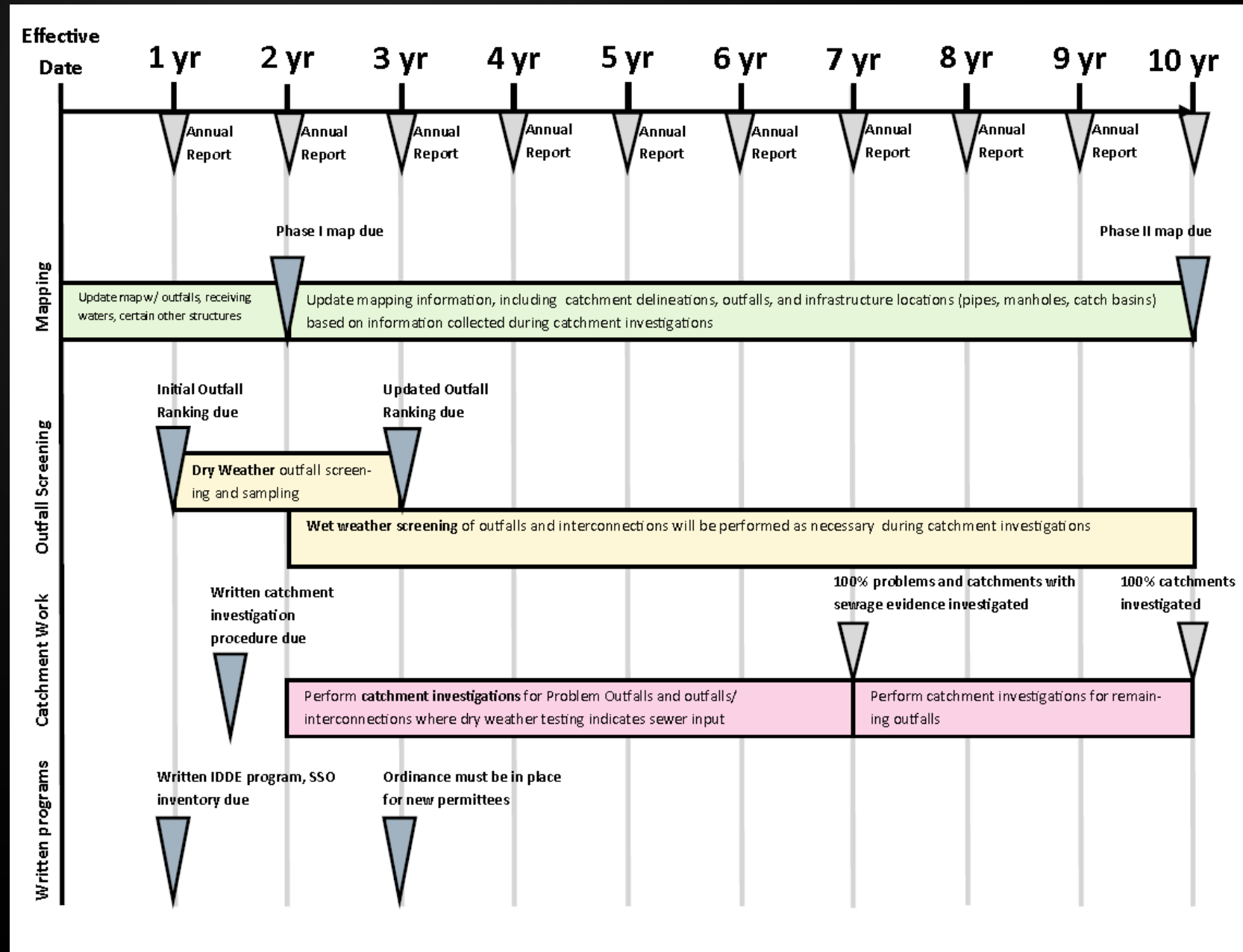
- THIS SECTION HAS BEEN REORGANIZED SEQUENTIALLY FOR CLARITY
- STILL A 10-YEAR IMPLEMENTATION TIMEFRAME



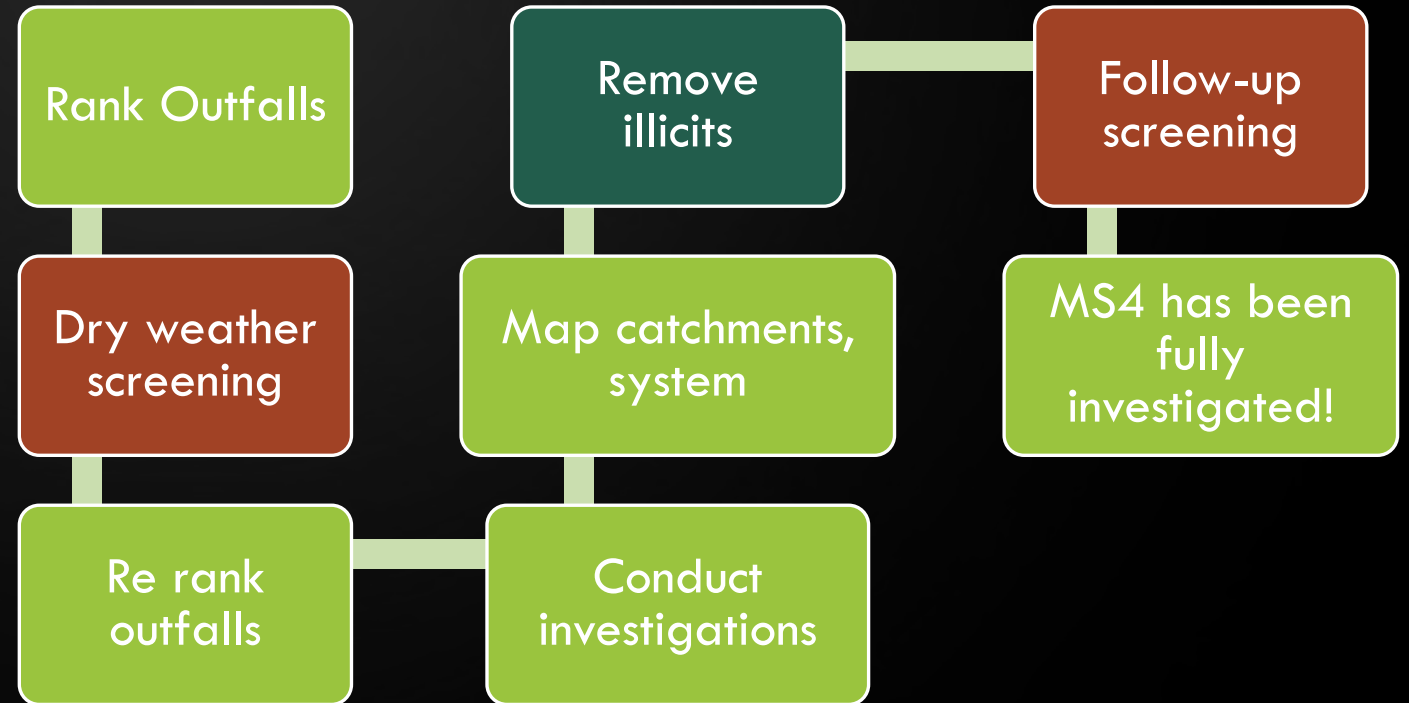
MA FINAL PERMIT: CHANGES BASED ON COMMENTS ON THE IDDE REQUIREMENTS



MA FINAL PERMIT: CHANGES BASED ON COMMENTS ON THE IDDE REQUIREMENTS



- CRITERIA TO RANK OUTFALLS HAVE BEEN MADE MORE EXPLICITLY FLEXIBLE FOR TOWNS TO DETERMINE THEIR OWN PRIORITY OUTFALLS
- CERTAIN SYSTEM VULNERABILITY FACTORS (WET WEATHER SCREENING) HAVE BEEN MADE DISCRETIONARY



MCM-4 CONSTRUCTION SITE STORMWATER CONTROL

REQUIREMENTS

- ORDINANCE
- SITE INSPECTION PROCEDURES
- SEDIMENT CONTROL REQUIREMENTS
- REQUIREMENTS TO CONTROL WASTE
- SITE PLAN REVIEW

MAJOR CHANGES

- NONE

MCM -5 POST CONSTRUCTION STORMWATER MANAGEMENT

NEW DEVELOPMENT

- COMPLY WITH MASSACHUSETTS STORMWATER STANDARDS 1, 2, 3, 5, 6 AND 9 FULLY
- RETAIN THE FIRST 1 INCH OF RUNOFF FROM IMPERVIOUS AREA ONSITE OR DESIGN TREATMENT SUCH THAT 90% OF THE AVERAGE ANNUAL LOAD OF TOTAL SUSPENDED SOLIDS (TSS) AND 60% OF THE AVERAGE ANNUAL LOAD OF TOTAL PHOSPHORUS GENERATED FROM THE IMPERVIOUS AREA ON THE SITE IS REMOVED PRIOR TO DISCHARGE

REDEVELOPMENT

- COMPLY WITH MASSACHUSETTS STORMWATER STANDARDS 1, 2, 3, 5, 6 AND 9 TO THE MAXIMUM EXTENT FEASIBLE
- RETAIN THE FIRST 0.8 INCH OF RUNOFF FROM IMPERVIOUS AREA ONSITE OR DESIGN TREATMENT SUCH THAT 80% OF THE AVERAGE ANNUAL LOAD OF TOTAL SUSPENDED SOLIDS (TSS) AND 50% OF THE AVERAGE ANNUAL LOAD OF TOTAL PHOSPHORUS GENERATED FROM THE IMPERVIOUS AREA ON THE SITE IS REMOVED PRIOR TO DISCHARGE
 - OFFSITE MITIGATION IS ALLOWED

MCM – 5 POST CONSTRUCTION STORMWATER MANAGEMENT

OTHER MAJOR CHANGES

- REPORT ASSESSING STREET DESIGN AND PARKING DEADLINE EXTENDED TO 4 YEARS
- LINEAR PROJECT EXEMPTION
- INVENTORY OF RETROFIT SITES NOW REQUIRES IDENTIFICATION OF 5 SITES, NOT ALL SITES
- REQUIREMENT TO TRACK DCIA HAS BEEN REMOVED

MCM – 6 GOOD HOUSEKEEPING

REQUIREMENTS

- O&M PROCEDURES
- CATCH BASIN CLEANING
- STREET SWEEPING
- SWPPP

MAJOR CHANGES

- DEADLINES FOR O&M PLANS AND FULL STORMWATER POLLUTION PREVENTION PLANS (SWPPPS) FOR MUNICIPALLY-OPERATED PROPERTIES HAVE BEEN COORDINATED AT 2 YEARS FOR BOTH
- REQUIREMENTS TO MEASURE MATERIAL CLEANED OUT OF INDIVIDUAL CATCH BASINS HAS BEEN REMOVED

IMPAIRED WATERS REQUIREMENTS

- NITROGEN
- PHOSPHORUS
- METALS
- SOLIDS
- BACTERIA OR PATHOGENS
- CHLORIDE
- OIL AND GREASE

ALL REQUIREMENTS IN
APPENDIX H

BACTERIA/PATHOGEN REQUIREMENTS

REQUIREMENTS

- ADDITIONAL PUBLIC EDUCATION MESSAGES
- CATCHMENTS RANKED AS HIGH PRIORITY FOR IDDE

MAJOR CHANGES

- EDUCATION MESSAGES CAN BE COMBINED WITH OTHER IMPAIRED WATERS REQUIREMENTS
- RELIEF FROM REQUIREMENTS AVAILABLE UNDER CERTAIN CONDITIONS

NUTRIENT IMPAIRED WATERS

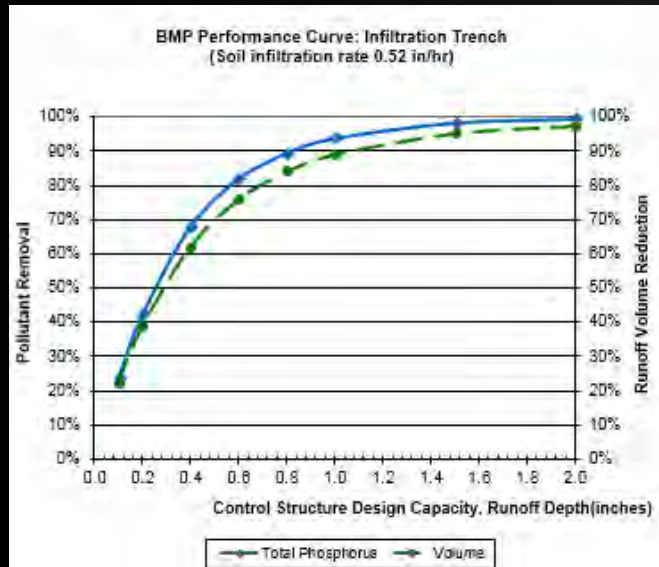
REQUIREMENTS

- ADDITIONAL PUBLIC EDUCATION MESSAGES
- ADDITIONAL NEW AND REDEVELOPMENT REQUIREMENTS
- ADDITIONAL GOOD HOUSEKEEPING REQUIREMENTS
- NUTRIENT SOURCE IDENTIFICATION REPORT

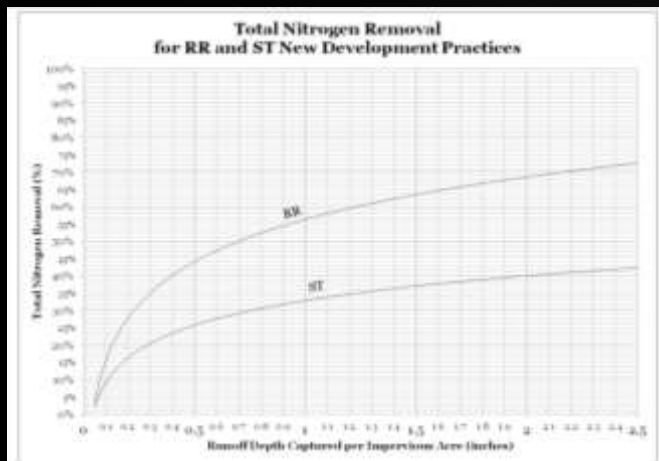
MAJOR CHANGES

- EDUCATION MESSAGES CAN BE COMBINED WITH OTHER IMPAIRED WATERS REQUIREMENTS
- RELIEF FROM REQUIREMENTS AVAILABLE UNDER CERTAIN CONDITIONS

NUTRIENT SOURCE IDENTIFICATION REPORT



- Due Year 4
- Delineate potential N or P sources
- ID potential retrofits
- 1 demonstration project by year 6
- Tracking of N or P reductions through implementation of structural BMPs



CHLORIDE IMPAIRED WATERS

REQUIREMENTS

- SALT REDUCTION PLAN
- ADDITIONAL PUBLIC EDUCATION MESSAGE
- MECHANISM TO ENSURE PRIVATE INDUSTRY AND COMMERCIAL SITES COVER SALT PILES
- ADDITIONAL NEW AND REDEVELOPMENT REQUIREMENTS

MAJOR CHANGES

- RELIEF FROM REQUIREMENTS AVAILABLE UNDER CERTAIN CONDITIONS

SEDIMENT, METALS OR OIL AND GREASE IMPAIRED WATERS

REQUIREMENTS

- ADDITIONAL GOOD HOUSEKEEPING REQUIREMENTS
- ADDITIONAL NEW AND REDEVELOPMENT REQUIREMENTS

MAJOR CHANGES

- RELIEF FROM REQUIREMENTS AVAILABLE UNDER CERTAIN CONDITIONS

RELIEF FROM IMPAIRED WATERS REQUIREMENTS

- RECEIVING WATER (INCLUDING DOWNSTREAM RECEIVING WATERS FOR NUTRIENT IMPAIRMENTS) DETERMINED TO BE NO LONGER IMPAIRED
- A TMDL INDICATES ADDITIONAL MUNICIPAL STORMWATER CONTROLS ARE NOT NECESSARY TO ADDRESS POLLUTANT OF CONCERN IN WASTE LOAD ALLOCATIONS
- THE PERMITTEE'S DISCHARGE IS DETERMINED TO BE BELOW APPLICABLE WATER QUALITY CRITERIA
 - (BACTERIA, METALS, SEDIMENT, CHLORIDE, OIL AND GREASE IMPAIRMENTS ONLY)

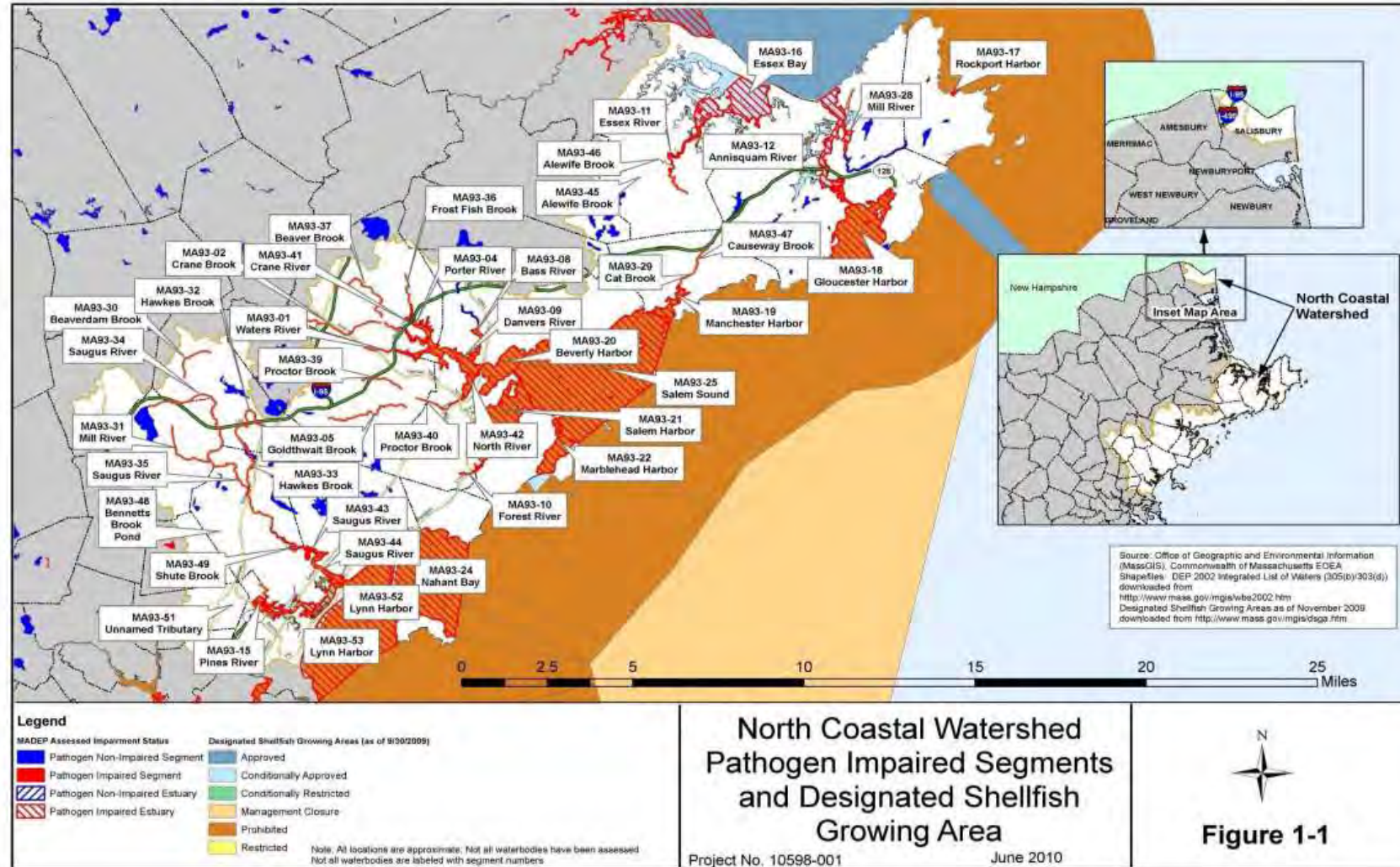
TMDL REQUIREMENTS

- **BACTERIA AND PATHOGEN TMDLS**
- CHARLES RIVER PHOSPHORUS TMDLS
- LAKE AND POND PHOSPHORUS TMDLS
 - CAPE COD NITROGEN TMDLS
 - ASSABET RIVER PHOSPHORUS TMDLS
- LONG ISLAND SOUND NITROGEN TMDL
- PHOSPHORUS AND METALS TMDLS FOR RHODE ISLAND WATERS

BACTERIA/PATHOGEN TMDLS

Noth Coastal Watershed

Figure 1-1 North Coastal Pathogen Impaired Segments



BACTERIA/PATHOGEN REQUIREMENTS

REQUIREMENTS

- ADDITIONAL PUBLIC EDUCATION MESSAGES
- CATCHMENTS RANKED AS HIGH PRIORITY FOR IDDE

MAJOR CHANGES

- EDUCATION MESSAGES CAN BE COMBINED WITH OTHER IMPAIRED WATERS OR TMDL REQUIREMENTS
- RELIEF FROM REQUIREMENTS AVAILABLE UNDER CERTAIN CONDITIONS

RELIEF FROM TMDL REQUIREMENTS

- IF THE TMDL HAS BEEN MODIFIED/REVISED/WITHDRAWN WITH EPA APPROVAL
- A NEW TMDL INDICATES ADDITIONAL MUNICIPAL STORMWATER CONTROLS ARE NOT NECESSARY TO ADDRESS NITROGEN WASTE LOAD ALLOCATIONS

ASSISTANCE TOOLS AND WORKSHOP/WEBINAR IDEAS

THINGS WE HAVE

- OPTI-TOOL
- BATT
- COST ESTIMATOR SPREADSHEETS
- IDDE TIMELINE
- LOW IMPACT DEVELOPMENT RESOURCES
- MASSDEP WEBSITE

OTHER IDEAS

- TIMELINE FOR PERMIT DELIVERABLES
- PERMIT CHECKLISTS
- TEMPLATES FOR ANNUAL REPORT, SWPPP
OTHERS?
- TARGETED WORKSHOPS /WEBINARS ON
SPECIFIC TOPICS (E.G.: IDDE)

QUESTIONS

EPA MA MS4 WEBSITE:

[HTTPS://WWW3.EPA.GOV/REGION1/NPDES/STORMWATER/MS4_MA.HTML](https://www3.epa.gov/region1/npdes/stormwater/ms4_ma.html)

Newton Tedder

tedder.newton@epa.gov

617-918-1038

Fred Civian

frederick.civian@state.ma.us

617-292-5821